

EHPAD Rue Blanche



Location: Paris France

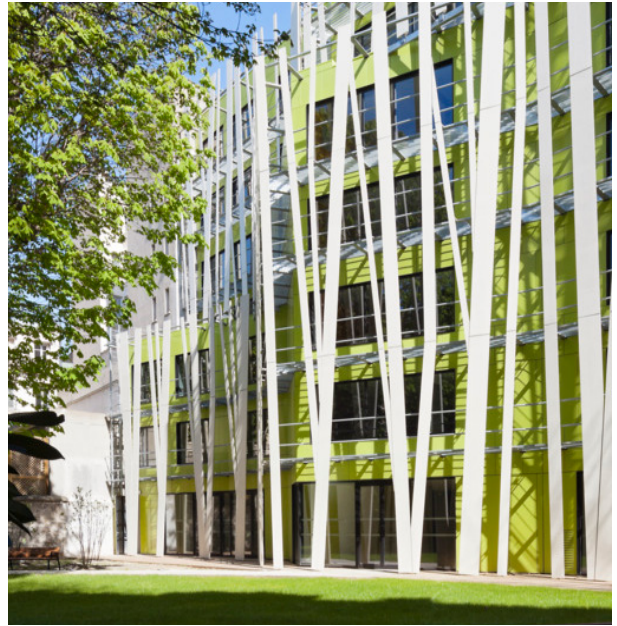
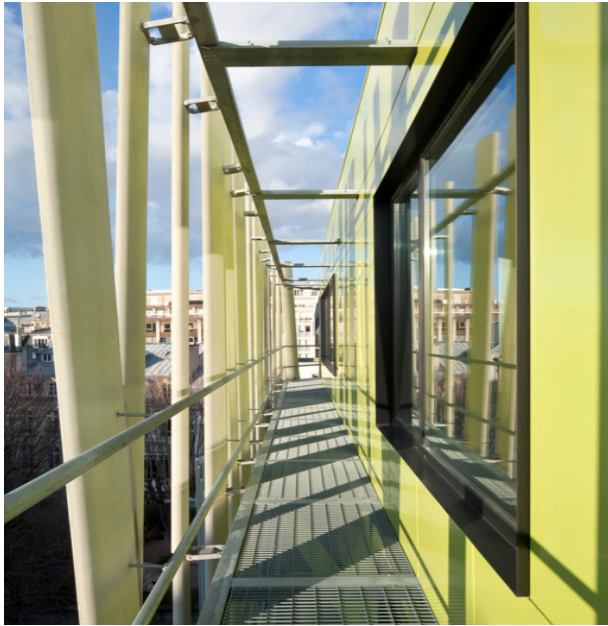
Date: 2013

Architect: Philippon-Kalt Architectes-Urbanistes

Solution and technologies: Enveloppe

Introduction

The agency of Philippon-Kalt Architectes-Urbanistes was entrusted with the renovation and expansion of a unique care facility (EHPAD), exclusively dedicated to people suffering from Alzheimer's.



Description

The building's façade was entirely restructured and surrounded with a self-supporting lattice-style system in white Ductal® Envelope, consisting of a series of tall, thin "blades" or columns (6m-long, 20 to 65 cm-wide and 7 to 12 cm-thick). Looking like bamboo stems swaying in the wind, the lattice system surrounds a 1,000 m² surface area for the 22m-high building. The façade allows plenty of the light to filter through to the rooms inside, ensuring that the patients receive a daily dose of sunshine.

Optimization

The layout of the blades is different from one to another, in order to maximize the beautiful external view, allow the daylight to permeate the interior and to regulate the temperature of the building.

